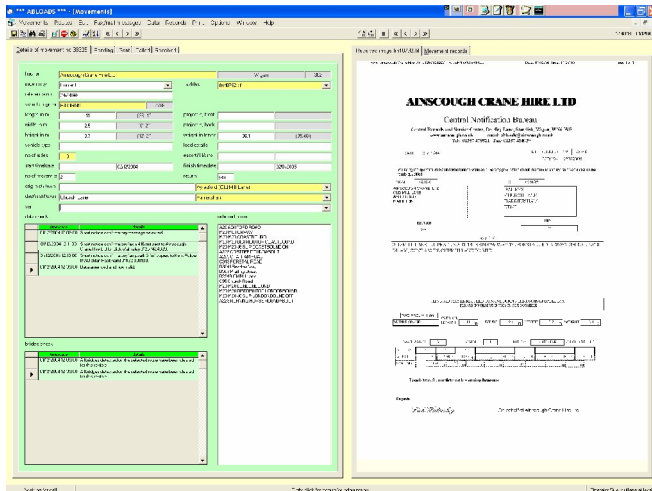


***** ABLOADS *****

**For Highways Agency
Managing Agent Contractors**

Now with email!



Version 4
20 January 2005
Helpline 01483 811202
Web www.cascadesoft.co.uk

Cascade Software Limited
Brixbury House
Down Lane, Compton
Guildford, Surrey GU3 1DQ

Does *** ABLOADS ***** meet the ‘AIL System’ requirements set out in the Highways Agency’s Managing Agent Contract?**

What are the benefits in using *** ABLOADS *****?**

What is involved in installing *** ABLOADS *****?**

How much will *** ABLOADS ***** cost?**

Does *** ABLOADS ***** meet the requirements for the ‘AIL System’ set out in the new Managing Agent Contract?**

In general the facilities and features in ***** ABLOADS ***** extend considerably beyond the requirements set out in the Contract. As an established, mature and sophisticated software package, under continuous development and in service since 1997, it has the obvious advantages of being fully tried and tested software. Its checking engine is based on Cascade’s bridge assessment software as used by many consultants and bridge authorities through the last decade. Some of the contract’s future-proofing data storage requirements imply minor changes and additions to the package, and with the HA’s agreement these will be made in due course when their function has been clarified.

What are the benefits in using *** ABLOADS *****?**

Now with fully integrated email and fax facilities, ***** ABLOADS ***** provides a comprehensive and auditable management system for the whole abnormal load notification process. Over its years of development, a host of clever ideas to ease the processing workload have been incorporated. But of course the principal benefit by far to be gained from using ***** ABLOADS ***** is that it provides a uniform and secure check of each bridge on the abnormal load vehicle’s route for its specific axle load and spacing arrangements. It undertakes this by utilising Cascade’s bridge analysis software in a procedure which compares the effects of the specific vehicle with those generating its assessed load capacity, span by span and critical load case by load case. This is a sophisticated, superior and proved method, based on established software operated and tested over many years. More information on ‘**How ***** ABLOADS *** Checks Bridges****’ is available in the ***** ABLOADS ***** Product Information leaflet, or on our website www.cascadesoft.co.uk.

Checking does not depend on the individual operator. Whoever is operating the ***** ABLOADS ***** system, the program ensures the same consistent degree of uniformity and security time after time after time. ***** ABLOADS ***** is generally operated by non-technical staff – a good geographical knowledge of the area and

reasonable computer skills are the principal requirements.. A supervisory engineer should be available in a backup capacity, but will probably only be needed be required very occasionally, a few times a year.

Complete data management allows full reporting. This means, for example, that problem structures can be identified and ranked in order of importance. The database builds up to contain full haulier and vehicle records, and deals completely with the transmission of annual indemnity reminders and circulars. If you need to carry out traffic management, for example, ***** ABLOADS ***** will report on the abnormal load use of a particular length of road.

***** ABLOADS ***** provides uniformity of use and presentation, and over time encourages a more consistent and accurate data notification by hauliers. In this respect ***** ABLOADS ***** integrates fully with ***** AbHaulier *****, Cascade's parallel software for hauliers and plant operators, so that transmitted data can be entered into ***** ABLOADS ***** automatically, even when transmitted by fax., using Cascade's Autotext protocol.

What is involved in installing *** ABLOADS *****?**

Structures data is imported directly into ***** ABLOADS ***** by extract and field matching from the bridge authority's data source, for MACs usually SMIS. Data can be imported in a variety of common data formats.

***** ABLOADS ***** retrieves structure and other data relevant to a particular route by first identifying the route on its mapping display. The principal selection is of bridges, but a new flexible attachment routine will allow other information, roadworks and structure widths for example, time delimited if required, to be attached to road elements and recovered with the selected route.

The mapping data can come from a variety of sources and is customised to the particular user organisation.. Many areas are already covered by existing bridge authority GIS systems from which motorway and trunk road data may be readily extracted. But for MACs it is more usual to utilise Ordnance Survey MasterMap data.

Topographical data showing boundaries, rivers and railways is very desirable for display purposes. Most authorities with GIS systems have suitable topographical mapping data available, generally from OS sources, or it can be extracted from OS large scale mapping.

The program contains extensive routines for dealing with data updates.

Setting up and training

***** ABLOADS ***** is a sophisticated package, involving faxes and email, mapping, data management and bridge checking, and Cascade carries out the full installation of software and data on your hardware to make sure it is fully customised and set up before it goes 'on line'. This also gives us the opportunity to train your operator(s) on your system as well as on the Kent County Council system which operates from our offices. Learning how to use the program is relatively quick – it is largely intuitive – but the key to successful operation is a good geographical knowledge of the area and problem structures involved, and that is acquired with experience.

Hardware

***** ABLOADS ***** needs a well specified PC to ensure that the software, particularly the mapping display, operates without noticeable delay. The PC should have a large and good quality preferably flat screen monitor to help on screen operation, a reliable fax modem and dedicated telephone line, and a simple black & white printer for hard copy. The back up device can range from a simple Iomega Zip drive to network provision.

Software

The PC operating system should be Windows 2000/XP, and an office package such as Microsoft Office should also be available. Mail operation will require a mail profile and suitable mail account.

How much does it cost?

The basic cost of the ***** ABLOADS ***** software for MAC use is £9,000 and the current annual maintenance charge is £1,100. There will be some initial set up costs incurred by the Client in assembling data and incurred by us in setting up and customising the Client's system and data and training his staff. The Client may also elect to purchase new hardware for the installation. All this can mean an initial outlay of perhaps £12-£14,000.

If you would like a detailed quotation, please call us. We will meet with you to discuss data sources and any other matters, and follow this up with a fully priced quotation.